



GMT MONTHLY MEMBERSHIP PROGRESS REPORT

Results as of: 9/30/2017

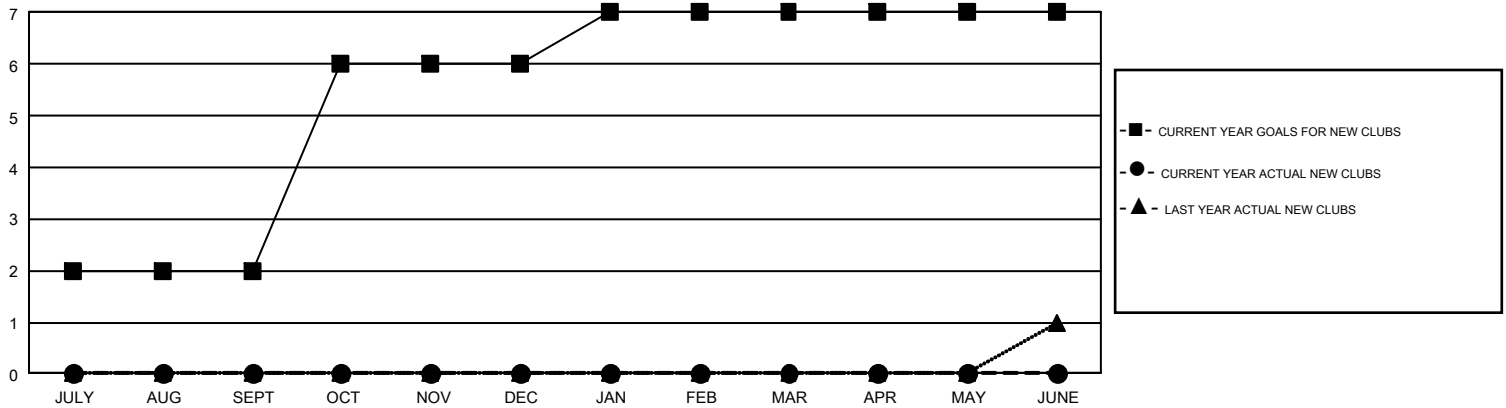
GMT Constitutional Area 7, Group B

GMT: CLIFFORD HEYWOOD

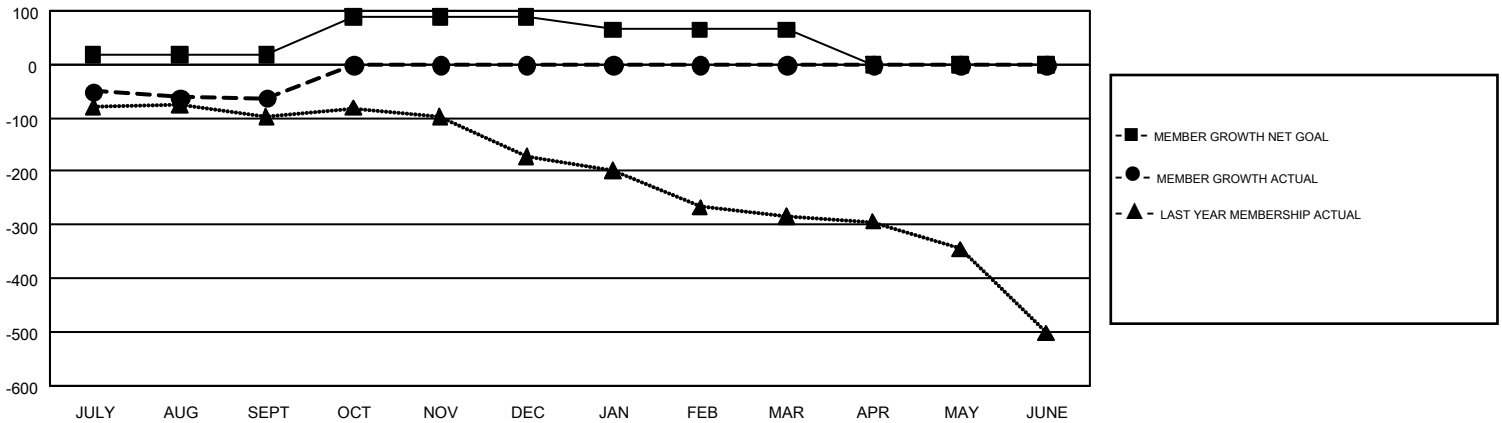
REPORT DOES NOT INCLUDE CLUBS IN UNDISTRICTED AREAS.

Clubs				Members			
RESULTS FOR 2017-2018				RESULTS FOR 2017-2018			
QUARTER	NEW CLUB GOAL	NEW CLUBS	DROPPED CLUBS	QUARTER	MEMBER GROWTH NET GOAL	MEMBER GROWTH ACTUAL	DROPPED MEMBERS ACTUAL (including transfers)
JULY/AUG/SEPT	2	0	4	JULY/AUG/SEPT	18	172	235
OCT/NOV/DEC	4	0	0	OCT/NOV/DEC	71	0	0
JAN/FEB/MAR	1	0	0	JAN/FEB/MAR	-24	0	0
APR/MAY/JUNE	0	0	0	APR/MAY/JUNE	-65	0	0

GOALS AND ACTUAL NEW CLUBS CUMULATIVE



GOALS AND ACTUAL MEMBERS CUMULATIVE



DROPPED CLUBS: 4	110 CLUBS OF 361 ADDED 1 OR MORE NEW MEMBERS	GENDER DISTRIBUTION MALE 6,774 (69.86%) FEMALE 2,923 (30.14%)
DROPPED MEMBERS DECEASED 40 CLUB CANCELLED 0 OTHER 194 TOTAL 234	CLICK HERE FOR CUMULATIVE MEMBERSHIP DATA	TOTAL FAMILY UNIT MEMBERS 838 FAMILY MEMBERS PAYING HALF DUES 424